

Maidenhead Rowing Club Emergency Response Plan 2022

1. Summoning assistance in the case of an emergency:

1.1 Dial 999 from one of the two Club landline telephone handsets (Club number 01628 622664)

These are located:

- a) on the inner wall in the middle bay of the boathouse, next to the lockers – black handset.
- b) on the bar counter in the 1st floor Club Bar next to the door to the kitchen – white handset.

If neither of these are quickly accessible, use a mobile phone to dial for 999 and ask for either:

1.2 The Ambulance Service

For emergencies where casualties are not at physical risk, e.g. safely on the river bank or at the Club House, describe whether the casualty is breathing or not, conscious or unconscious, with a pulse or not, their approximate age, male or female and the location of the casualty. Also see 3.6 for the Thames Valley Air Ambulance Service (TVAA) Charity.

or

1.3 The Fire and Rescue Service

For river emergencies where casualties are either missing or at serious risk and require a river rescue, ask for the Water Rescue Unit and state the numbers of casualties that are missing, whether they are juniors or seniors and their last known location.

The nearest brigades with Water Rescue Units are based in Beaconsfield and Reading.

For fire emergencies in the absence of any Committee Member, dial 999 and ask for the Fire and Rescue Service and describe the exact location of the fire within the building if known and state whether there is anyone left in the building (e.g. in the top floor ergo room) if known and describe the location of any known risk hazards such as the launch petrol tanks storage bin next to the Regatta shed and the gas cylinders from the BBQ stored next to the petrol storage bin, the paint solvents stored in the Regatta shed, the items in the kitchen and bar and the main gas supply cut off key location by the rear door to the Boat House.

2. Location Descriptions and Information:

2.1 Club Phone Number:

01628 622664

2.2 Club House Address:

Maidenhead Rowing Club
The Boat House
River Road
Taplow
Maidenhead
Berks
SL6 0AT

2.3 Club House Location:

On the Maidenhead section of the Bray Reach of the River Thames between Boulter's and Bray locks.

South of the A4 Bath Road close to Maidenhead Bridge, accessed from River Road on the east side of the river, on the Taplow, Bucks river bank.

2.4 The Club OS Grid Reference and the 'what3words' Grid Reference are:

SU 90192 81274 / SU 901812

And:

fires.tower.lakes

(Passenger Boat Association (PBA) Emergency Rendezvous Point (ERP) 39)

2.5 Nearest Public Slipway:

Upstream of Bray Lock, opposite the end of Headpile Eyot on the Berks bank, next to:

The Waterside Inn
Ferry Road
Bray
Berks
SL6 2AT

01628 620691

Access is through Bray Village from the B3028 High Street (after the 'Fat Duck' restaurant), into and along to the end of Ferry Road.

Grid reference SU 903 797 (PBA ERP 38)

2.6 Emergency River Incident Location Descriptions:

Describe these as either:

Downstream/south of the Club House and upstream/north of Bray Lock.

or

Upstream/north of the Club House and downstream/south of Boulters Lock.

Further define the location as either downstream/south or upstream/north of the Maidenhead A4 Road Bridge and/or the Maidenhead Sounding Arch Railway Bridge.

Describe the nearest river bank when facing upstream as left - Berks bank, or right – Bucks bank.

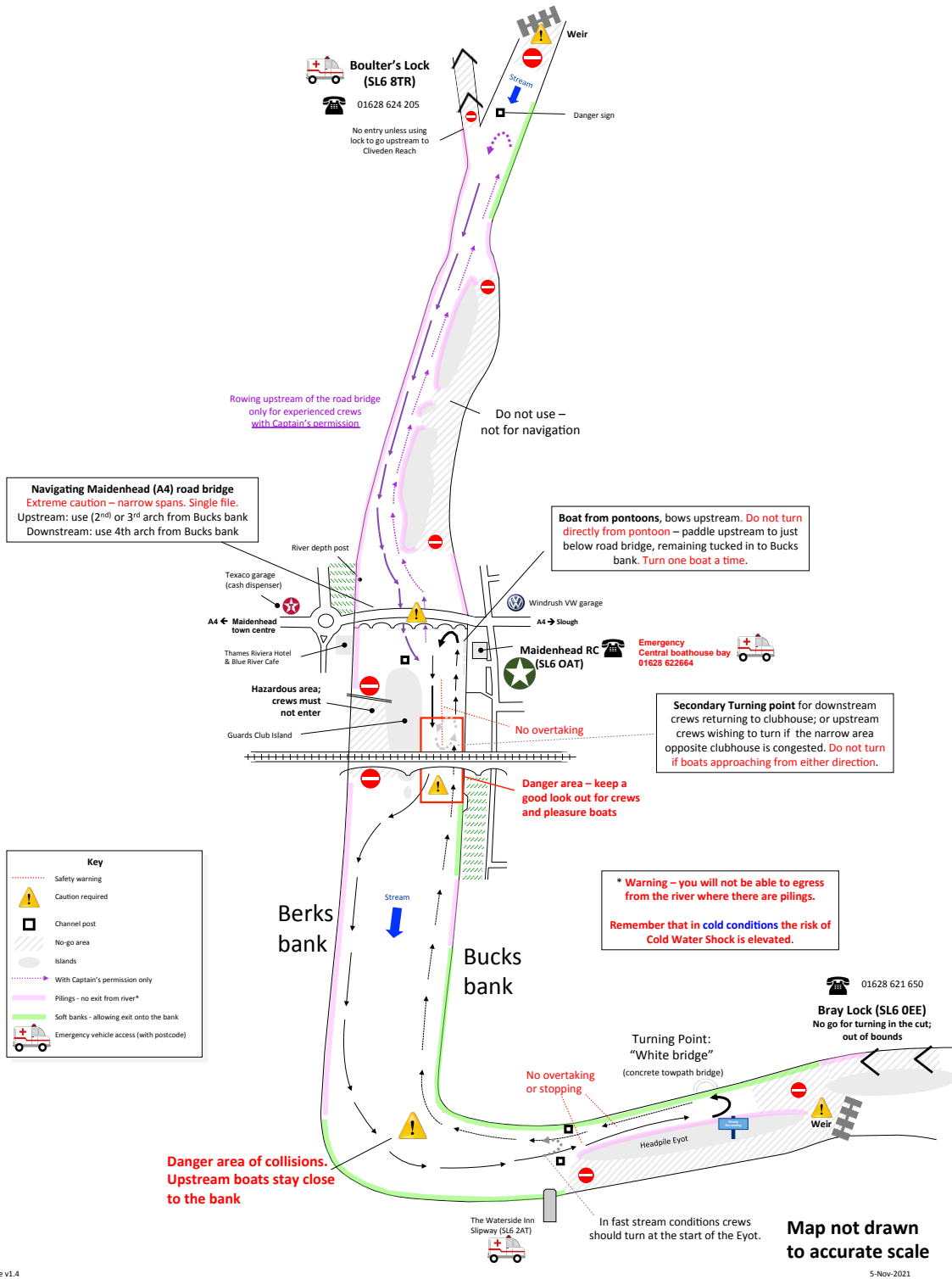
Describe the incident location relative to any landmarks such as the Waterside Inn, the steps downstream of the Sounding Arch Railway Bridge, the Blue River Café / Thames Riviera Hotel, Bridge Gardens, the Thames Hotel, Jenners Café, The Boathouse at Boulters Lock Restaurant.

The nearest slipway is next to the Waterside Inn, Ferry Road in Bray Village on the Berks bank.

The nearest access roads to the river are either along River Road, Taplow and then the Thames Path for downstream/south of the Club House towards Bray Lock on the Bucks bank, or along the A4094 Ray Mead Road, Maidenhead running alongside the river for upstream/north of the Club House towards Boulters Lock on the Berks bank.



Maidenhead Rowing Club Navigation map of Boulter's – Bray reach



Issue v1.4

5-Nov-2021

3. Other Emergency and Contact Numbers and Addresses:

3.1 Bray Lock: 01628 621650 (or 03708 506 506)

Bray Lock House
Amerden Lane
Taplow
Maidenhead
Berks
SL6 0EE
Lock Keeper - Keith Reeve.

Grid reference SU 910 798. (PBA ERP 37)

3.2 Boulter's Lock: 01628 624205 (or 03708 506 506)

Ray Mead Road
Maidenhead
Berks
SL6 8PE
Lock Keeper - Ralf Tompkin.

Grid reference SU 903 824 (PBA ERP 41)

3.3 Environment Agency Duty Waterways Officer: 0800 80 70 60.

3.4 NHS 111

Is the non-emergency number and will connect you to a highly trained adviser, supported by healthcare professionals.

NHS 111 is available 24 hours a day, 365 days a year.

You should use the NHS 111 service if you urgently need medical help or advice but it's not a life-threatening situation.

Call 111 if:

- you need medical help fast but it's not a 999 emergency
- you think you need to go to A&E or need another NHS urgent care service
- you don't know who to call
- you need health information or reassurance about what to do next

NHS 111 will ask you questions to assess the symptoms, then give you the healthcare advice you need or direct you to the local service that can help you best. That could be A&E (Wexham Park).

3.5 Wexham Park Hospital Slough: 0300 614 5000

Wexham Street
Wexham
Slough
SL2 4HL
Accident and Emergency Medicine Department open 24/7
Situated 7 miles / 25 mins from MRC.

3.6 Thames Valley Air Ambulance Service (TVAA) Charity

For major, serious trauma incidents where there is an imminent threat to life requiring urgent critical care, dial 999 and the control room dispatcher will identify the critical care categories for the TVAA and whether they are able to be tasked to attend.

The 'Helimed 24' Service has four Critical Care Response Vehicles (CCRV's), one of which is often deployed in the Maidenhead/Windsor/Slough area and these are manned by both a paramedic and a doctor.

If the Air Ambulance Helicopter is dispatched, the nearest landing site to the Club is the Taplow Riverside 'Country Park' grass field situated to the north east of the Maidenhead A4 Bath Road bridge and to the north of the A4 Bath Road mini roundabout, adjacent to Mill Lane / Jubilee Lane.

The preferred grid reference system used is 'what3words' and the landing site for this is: values.shot.gather.

The post code: SL6 0FA.

The OS Grid Reference: SU 90326 81556 / SU903815.

The access route on foot from the landing site to the Club, which has the what3words grid reference: fires.tower.lakes, is south along Mill Lane then after the Roux at Skindles restaurant, right down through the Marlow Boat Services boat yard, following the Thames Path footpath and under Maidenhead Bridge.

4. First Aid Kits

There are two main first aid kits contained in orange plastic cases and one is located on wall brackets against the back wall of the ground floor of the boat house, above the work bench near to the fire exit door and the other is located in the kitchen on the first floor, on the shelf above the wash hand basin.

Six other small first aid kits are stored in the launch safety bags which are located on the ground floor of the boat house, next to the singles racks, in the first bay.

5. Automated External Defibrillator – AED

The AED is located on the wall inside the front entrance door above the fire alarm panel.

6. List of Club First Aiders

Brian Smith	Caroline Steel
Darryl Preston	Diane Steel
Jim Hotchin	Keith Dixon
Kieran Mulvaney	Mike Frost
Trevor Perry	Vicky Palmer

7. List of Club Approved Launch Drivers

Type	Name	Date
RYA Level 2 (9 members & 1 Employee)	<i>Simon Ramskill</i>	
	<i>Nic Hutchins</i>	Refresher 17/06/21
	<i>Kieran Mulvaney</i>	
	<i>Peter Mole</i>	
	<i>Trevor Perry</i>	
	<i>Jim Hotchin</i>	
	<i>Darryl Preston</i>	17/09/21
	<i>Sean Kerns</i>	
	<i>John Rayer</i>	
	<i>Fred Smallbone</i>	Employed
	<i>Nick Steel</i>	Jan 2022
<i>Emma Hanson</i>		
Club Approved (51 members)	Billy Brooks	
	Gordon Fraser	
	Piers Alington	
	Adrian Smith	March 2015
	Keith Dixon	
	Owen Bryant	
	Peter Mutch	July 2009
	Marcus Richards	Jun 2008
	Andrew Scott	Sept 2017
	Rob Brockwell	
	Dylan Gomersall	Oct 2015
	Amelia Shire	August 2015
	Victor Kleshnev	August 2018
	Caroline Steel	December 2016
	Bob Nelhams	Sept 2015
	Claire Pugh	Sept 2019
	Natasha Brown	
	Edouardo Marshall	August 2018
	Alex Hollis	
	Claire Orr	
	Mike Harlow	
	Dawn Davies	Oct 2016
	Brian Smith	
	Colin Hendry	Oct 2014
	Liam O'Mahony	
	Alan Bird	Oct 2015
	Peter Smithson	Feb 2017
	Jim Oliver	July 2016
	Amaia Arregi	June 2015
	Diane Steel	Dec 2016
	Jonathan Sneller	Aug 2020
	Neil Stewart	Sep 2015, refresh May 2021
	Andy Jones	May 2017
	Mark Stockdale	
	Claire Langley	Jan 2019
	Elliot Kemp	
	Sean Kemp	
	Mike Frost	Nov 2018
	Laurie Caddell	Oct 2018
	Vicky Palmer	Sep 2020
Jim Gilhooley	Oct 2020	
Jasper King	May 2021	
Sue Harker		
Jan Boyd	Oct 2015	
Janet Woffinden	Refresher May 2021	
Dave Harrand		
John Steers	June 2021	
Ben Gray	June 2021	

	Mike Wright	September 2021
	Jordan Felstead	

8. Club Launch-Assisted Rescues

Club launches are the first level of response to undertake on-water rescue, the blue coaching launches should only be used as a very last option as they have very limited manoeuvrability and capacity.

The RS Cats 1, 2 & 3 must be resourced with both an RYA/Club Approved launch driver and also a crew member to undertake the rescue.

A list of Club launch drivers is also posted on the club noticeboard.

9. Fire Evacuation Plan

1. The main fire panel is located by the entrance door.
2. Break glass points are located by the exits.
3. Anyone discovering a fire must sound the alarm by activating the nearest break glass call point.
4. The building should be exited by following the (green man running) signage to the nearest marked exit, **but do not use the lift** and then assembling in the car park near to the entrance sign. An evacuation chair is available positioned near the safety noticeboard by the male & female changing rooms.
5. The Fire Brigade will be called by the first Committee Member on site or any other Member in their absence.
6. Do not stop to collect personal belongings and close all doors behind you where these are reasonable actions to take.
7. Fire extinguishers/appliances are located at strategic positions in the buildings and should only be operated by trained persons where necessary to exit the building.
8. The lead committee member and /or designates will meet the fire brigade when they arrive to advise on the possible location of the fire, the position of the fire panel and evacuation issues/difficulties so the brigade is immediately aware - a marked zone plan is available by the panel.
9. Do not re-enter the building until the Fire Brigade advises it is safe to do so.
10. Advice will also be given to the brigade on any high risk areas such as the launch petrol tanks storage bin next to the Regatta shed and the gas cylinders from the BBQ stored next to the petrol storage bin, the paint solvents stored in the Regatta shed, the items in the kitchen and bar and the main gas supply cut off key location by the rear door to the Boat House.
11. Do not cancel fire bells or the alarm panel until advised by the fire brigade, as information relating to the alarm may be lost.
12. Personal emergency evacuation plans are not currently required, however these are being developed for Adaptive members and human safety is the prime concern at the basis of all the risk management planning.

9. Fire Evacuation Plan Continued;

13. In the event that the fire alarm system/equipment breaks down, repairs shall be organised straight away.

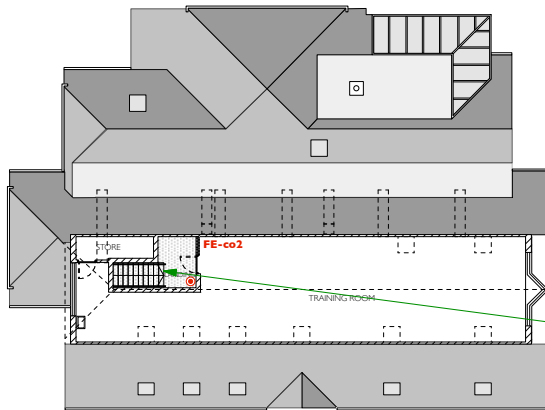
14. Members will be advised regarding the lack of cover and the following will be used; notices will be displayed, a verbal/manual warning system will be employed until equipment is back in service and relevant premises checks will be undertaken.

15. Where scheme fire equipment/installation/systems are altered or replaced, members will be advised.

16. New members will be inducted regarding the fire procedures and equipment in place.

17. Following fire alarm test or incidents information on improving the plan will be recorded and actioned, where a fire has occurred a fire report will be completed.

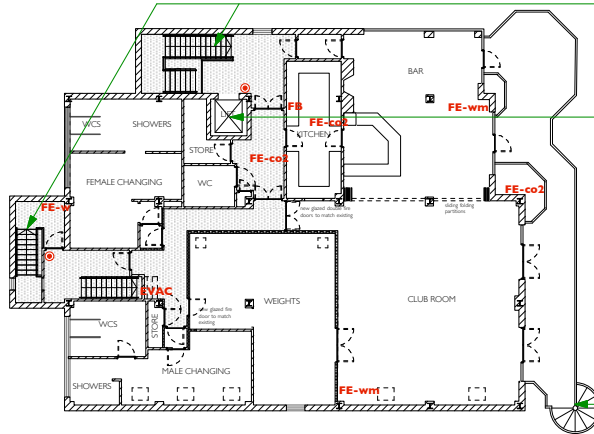
10. Fire Evacuation/Extinguisher Plan



- KEY**
- ⊙ fire call point
 - FE-f fire extinguisher - foam
 - FE-co2 fire extinguisher - carbon dioxide
 - FE-w fire extinguisher - water
 - FE-wm fire extinguisher - water mist
 - FE-as fire extinguisher - aqua spray
 - FB fire blanket
 - EVAC emergency evacuation chair
 - fire protected stair, lobby or corridor

second floor training room served by single fire exit stair to first floor and then by two fire exit stairs to final exit

SECOND FLOOR PLAN

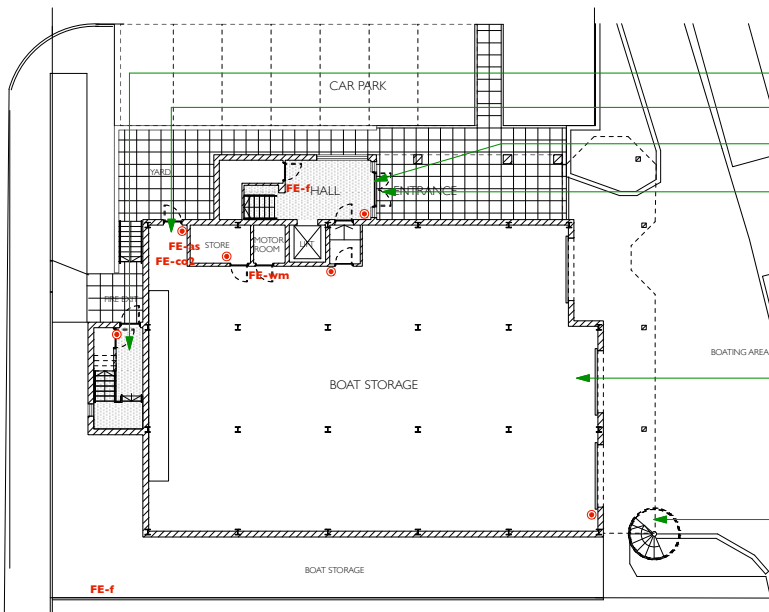


existing first floor accommodation served by two fire exit stairs

lift provides access to first floor changing rooms and club facilities

alternative exit via balcony and external spiral stairs

FIRST FLOOR PLAN



fire exit stairs discharge at rear of building

fire exit from rear of boathouse

fire exit stairs + lift discharge at main entrance

level entry to main entrance hall and lift

level threshold and sloping entry to boat storage bays from hardstanding and boating areas

alternative exit via balcony and external spiral stairs

GROUND FLOOR PLAN



0 1 2 3 4 8 12m

MAIDENHEAD ROWING CLUB
ACCESSIBILITY + FIRE EVACUATION
PLANS - February 2022
JEREMY BAILEY ARCHITECTS LIMITED
THE COURTNEY HOUSE WORKS WOODWAY COMMON SUDBURY Herts

11. Emergency arrangements for people with disabilities

There may be additional hazards and risks associated with rowers and others with a disability, depending on the extent of their disability.

This section of the ERP will be updated with any additional actions required to keep rowers and others with a disability safe as the Adaptive Rowing squad is established.

An evacuation chair is available positioned near the safety noticeboard by the male & female changing rooms.

General guidance is provided in British Rowing RowSafe 2020 Section 6.2.

<https://www.britishrowing.org/wp-content/uploads/2020/11/201110-RowSafe2020.pdf#page=78>

12. Club Activities in the Event of Emergencies

12.1 In the event of any emergency constituting a risk of injury or risk to life, all Club activities will immediately be suspended upon the direction of the Club Captain, the Club Safety Advisers, the Premises Manager, or any other Committee Member or any other senior member and/or coach in their absence, until the emergency has been resolved.

12.2 Party Hire and Corporate Hire Functions:

The Club Member/Supervisor/Attendee will instruct the hirer on where the fire exits are, the fire evacuation plan and the assembly point in the Car Park before the start of any function. Disabled or elderly guests attending the Function Room who use the lift to gain access to the first floor, must be given assistance to negotiate the staircases and to exit the building. An evacuation chair is available positioned near the safety noticeboard by the male & female changing rooms.

12.3 Communications:

For river emergencies, launch based coaches on the water will be contacted using one of the 6 Pronto P5200 radios (kept on charge in the boiler room) on channel 3. The coaches will instruct their crews to return to the Boat House immediately; the coaches then proceed to assist in any water rescue.

For land emergencies the Club House may be evacuated via the use of the Fire Alarm and in the event of a fire, the evacuation, procedures from **9. Fire Evacuation Plan** will be followed.

12.4 Social Media:

The Club Facebook page <https://www.facebook.com/MaidenheadRowingClub/> or individual squad Facebook pages, Twitter feed <https://twitter.com/MaidenheadRC>, or Club's Instagram account <https://www.instagram.com/maidenheadrowing/> or individual squad Instagram accounts or WhatsApp group or any other social media may be used by any Club member (both Senior and Junior) to cascade information about the emergency to Members, but great care must to be taken so that only accurate, verified information and data is relayed and that no personal information, particularly concerning the identity of any casualties, is revealed.

13. Club Member Contacts: -

Chairman:	Sean Kemp	0774 149 4810
Captain:	Dylan Gomersall	0798 932 5978
Safety Advisors:	Diane Steel and Chris Sneller	0791 260 6825 0770 328 2161
Welfare Officer:	Dawn Davies	0779 323 2963

END

February 2022